



MH PLUS

- SPECIALLY DESIGNED FOR -

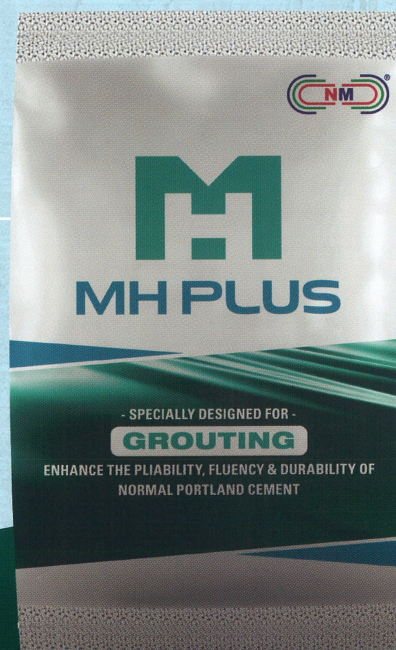
GROUTING

ENHANCE THE PLIABILITY, FLUENCY & DURABILITY OF
NORMAL PORTLAND CEMENT

M.H PLUS is a high quality powder additive for enhancing the pliability, fluency and durability of normal Portland cement.

It is specially designed for grouting and will result in reduction in cement shrinkage and crack.

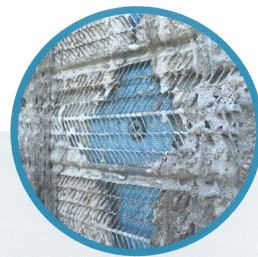
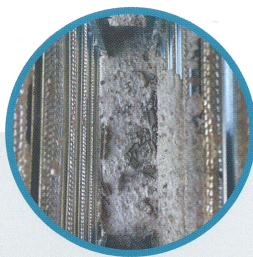
It is economical and easy to use excellent workability.





USAGE

- As additive of grouting cement in mortar pump operation.
- Speically designed for coarse sand
- Enhances the pliability, fluency and durability of cement mortar.
- Suited for use in INTEGRATED BUILDING SYSTEM (IBS).



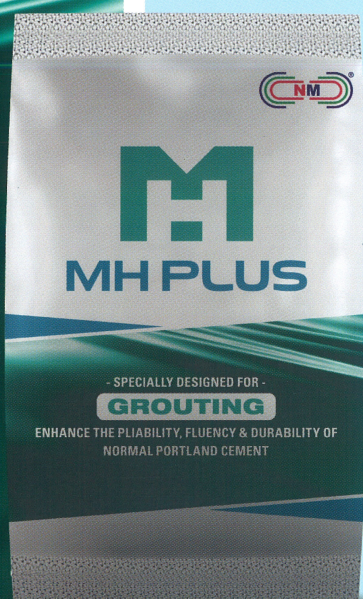
INTEGRATED BUILDING SYSTEM (IBS)

ADVANTAGE

- *Shrinkage and Crack Reducing*
- *Good Workability*
- *High Fluency*
- *Mix with Coarse Sand*
- *Easy Handing*

MIX RATIO

M.H PLUS	100g
Water	30 liters
Portland Cement	50kg
Fine / Coarse sand	200kg



PRODUCT PROPERTIES

COLOUR: White	BINDER: Additive for cement compatibility	ADDITIVE: Plasticizer to improve pliability, fluency and workability properties
SAFETY PRECAUTION: Wash with lots of water if contact with eye. Seek medical advice if symptoms persist.		TOXICITY: Non-toxic